



APRIL NEWSLETTER

APRIL 2006

PENTICTON—APRIL 2006

BIGGEST CONVENTION EVER!

INSIDE THIS ISSUE:

TERRY WEBBER 2
NEW DIRECTOR!

BOB FREW 3
NEW COORDINATOR!

SIRN MICHELSEN
NEW ASSOCIATE!

RAY CALDWELL 4
NEW ASSOCIATE!

ALEX FRASER
PRES. FOUNDER!

INDUSTRIAL PROGRAM 4
IT'S HERE NOW!

NEW AUTOSHIP!

BI-TRON REWARDS PROGRAM 5
IT'S BIG!

WHAT PEOPLE ARE SAYING 6

LEADERSHIP SCHOOL IN JULY! 7

NEW CONTEST!

CURRENT RANKS 6

The April 2006 Bi-Tron International Leadership School was an incredible success! There were many exciting announcements made including the introduction of the *Bi-Tron Rewards Program*, and the introduction of the new *Industrial Program*.



JO-ANNE & TIM MEISSNER

PRODUCER CONTEST WINNERS!

**NEW BI-TRON
REWARDS
PROGRAM IS
HERE!**

WWW.BITRONREWARDS.COM

Read all about it on Page 5!



Tim & Jo-Anne Meissner are the winners of the Bi-Tron Producer's Contest!

By coming to the April Leadership School and activating numerous Management Centers in their downline they received FREE tickets to the next Leadership School in Kelowna!

TERRY WEBBER NEW BI-TRON DIRECTOR!

I live in Logan Lake B.C.

I am Canadian raised into the retail business by my family in the lower mainland of B.C. I spent 30 years in the US in Oregon, where my husband and I owned and operated a logging/heli logging and construction business until his death in 1998.

I am a country girl at heart, I love people, animals, travel, fishing, rock hounding and panning for gold.

When I came home to Canada in 2000 I became involved with advertising for the Seniors Resource Directories based out of Kelowna. I also started a Bed and Breakfast business from my home. Then I met a woman who would become my best friend. She is the reason I am in Bi-Tron. She is my Sponsor, Christine Page. She introduced me to the product line and business opportunity in June 2004. I experienced immediate results with my vehicle, and a dramatic change in fuel/mileage. I called her from the States, where I was on vacation at the time; all excited and said 'have the papers ready I am in'.

I have been a bit reluctant to tackle more than I can handle due to a Stroke in 1998, that left me with some challenges, but when you love what you do somehow those challenges manage to get put in the background. There are times when I falter and those who know me and know of these challenges have enough faith in me to realize I will jump right back up, given a little time to recoup and regroup. For me it is a case of when you're up you're up. Luckily for me, up is becoming more frequent.

Well, now I have a new life and have learned to deal with the fact that no matter what life throws at us, we can survive. I am a survivor. I hope my story can be an inspiration to others who may be struggling with their own life issues.

There is light at the end of the tunnel, as long as you hold on.

I didn't do too much to move my Bi-Tron business forward at the beginning; I was still working on building my self confidence. I hung in though, knowing that the day would come when I would be able to 'get going' again and start reaping the benefits of this great business.

Doug and Mary-Anne Burtch, played a big part in this, by showing me how the compensation plan really worked and would eventually be the way for the residuals to give me a lifestyle that I wanted. Again, Doug, thanks so much for turning on the lights. There is a lesson here, even though Christine had explained it all to me, I could not see it. The reason for this, I believe is, we were too close. Hence, by her putting me in front of Doug I saw it in a whole new light. A personal three-way if you will. What you may not get imparted for one reason or another someone else can.

Unfortunately I faltered again, due to certain life issues. I did manage to become a Founder though in October 2005 and was building my downline a step at a time. It wasn't until Jan 1st 2006, when I finally felt that I had a purpose for the first time in Years. It was then that I reset my goals. I made a promise to myself and to Christine, who had hung in there with me, to go forward, the time was right. Bi-Tron's Cruise helped immensely with my decision. It was watching everyone's excitement and knowing if I had just worked harder I could have gone too. So while you Director's were having fun in the sun. I went to work. I knew where I was going I found MY PASSION.

Amazingly enough it became fun. I was retaining more and presenting better. By presenting better I was bringing new people on board. This was the enthusiasm I had been praying for, for a long time.

Whoopee! You sure couldn't find this in a Traditional Business.



Above: Terry Webber

Once Christine was back from the cruise, it was all systems go; we worked 24/7 with all my downline and their contacts.

Although it was a lot of hard work and effort, it created a lot of excitement for everyone too.

There is no amount of thanks that would suffice for Christine Page. She has been my constant source of inspiration. I would also like to thank Chuck Pinnell for his words of wisdom and encouragement while on my journey, along with George Moen for holding me up and standing with me every step of the way at the Conference. Gregg and Cheryl Bright, who have also been a great support to me. I am also extremely grateful to my excited downline and team who all pulled together. I am really looking forward to helping them all succeed too.

A huge thank-you to Dick Simmonds for putting this wonderful exciting company together for all of us to share.

I am so looking forward to an exciting future with this company. For a long time I had lost all my confidence, but it seems Bi-Tron has not only provided me with savings at the pump, but it's pumped me up with renewed confidence and hope and given me a second chance; talk about a win win situation. For this I will be forever grateful.

BOB FREW**NEW COORDINATOR!**

Bob Frew was born in New Westminster, British Columbia, and now lives in Coquitlam, B.C..

Bob enjoys going to the theatre and spending time with his family. He is also an avid sports fan. He plays on an Old Timers hockey team and loves the B.C. Lions.

Bob's background is in marketing and he now owns a successful marketing company called *1st Quality Marketing & Promotions*. The company specializes in lead generation.

Bob was approached by Bi-Tron Distributor, Robert Skinner in October 2004. He decided to join Bi-Tron after finding out his good friend Donna Willon was already a distributor and he trusted her instincts about the company. Without missing a

beat Bob joined Bi-Tron as a Founder. Since then Bob has moved through the ranks at a great pace of one advancement every three months! His goals reflect this momentum. Bob plans on becoming a Director by the next International Leadership School in July. Since becoming a Bi-Tron Distributor Bob has learnt a lot and says that he is currently learning to manage his expectations more realistically. Bob is a business owner and as such he has to manage his time carefully to fit Bi-Tron into his schedule. Currently Bob dedicates about 10 hours per week to his Bi-Tron business. An exercise which Bob highly recommends to everyone is Donna Willon's Ideal Week Exercise (available in the Online Library).

It helps organize your week in a clear and easily followed way. By organizing your week/month you can then set better goals. Bob says that his goal of reaching a different rank every three months is doable by anyone who organizes their time and sets reachable goals. Furthermore, Bob is offering to help anyone do the same thing he has by contacting him at: bobfrew1@shaw.ca. Bob also says that there are no excuses. The Bi-Tron business is duplicatable in every way and all a person has to do is be disciplined and take the necessary steps to get things done. Nobody is ever alone and by working with your upline results can be amazing. "You only get what you put in," Bob says.

Congratulations Bob!



Above: Bob Frew

SIRN (MITCH) MICHELSEN**NEW ASSOCIATE!**

"I was born too long ago, and grew up on a farm. Maybe that is one of the reasons that Bi-Tron appeals to me. I spent my youth greasing and oiling and fueling farm machinery.

Compared to the cost of engines, transmissions and other things mechanical - lubrication is cheap. Bi-Tron especially, is not expensive compared to the benefits.

I spent 21 years in the RCMP, most of it in intelligence activity. Somewhere in there I went to university for five years. After the RCMP I went into the "oilpatch" in Alberta working for a huge international pipelining and petrochemical firm. I traveled a lot all over North America, from the Arctic to Central America. Then I was a regional coroner for a few years and supervised the death investigations in the lower mainland and the Okanagan. I retired from that and went to the USA and did some organizational consulting, and emergency plan-

ning. I was restless or adventurous I suppose.

I first saw a Bi-Tron demo in a Calgary driveway in 1998. I was impressed! Then it disappeared. Much later an acquaintance in Kelowna told me about it - I tried it and it worked - just like I was told. I got connected with Cam Shipowick and Doug Burtch and signed up as a Founder. I also became involved with two other energy efficiency products just before I found Bi-Tron. So now I can respond to energy efficiency needs domestically, commercially and industrially with solar, electrical and now lubrication applications. Then, my connections in Arizona came into fruition. I contacted people that I had met while there doing the consulting previously mentioned. It is growing very well in the desert.

I firmly believe that this country and the world need energy efficiency desperately, but few people know it - especially politi-

cians and bureaucrats who focus on more production, more drilling. The opportunities in Bi-Tron are excellent and growing. The support from the organization is exceptionally good. There is a Bi-Tron camaraderie which I enjoy.

There are difficulties of course. There always are. My suggestion is that every day we do at least one thing in support of our Bi-Tron business. Most days we must do more.

I took too long in becoming an Associate. I intend to get to the next level faster.

I know that I can because I am more committed, and people like Cam and Doug and Tim and many others are backing me. I love the genuine enthusiasm surrounding Bi-Tron. It is a great product line at the right moment in time. Lets go for it!"

Sirn Michelsen

**International
Leadership
School is
coming in
July '06!
Do you have
your ticket?**

RAY CALDWELL NEW ASSOCIATE!

I was born and raised in southern Alberta and attended university in the United States. Upon graduation I married my wife Judith from Ohio. We have four sons and 11 grandchildren. My professional career was as a diplomat with the Canadian Department of External Affairs. I served overseas in Czechoslovakia, Cyprus, Nigeria and Portugal. In 1979 we moved to Arizona where we have been involved in a variety of business ventures. In 1999 we thought it was time to retire, but not willing to endure daytime television, we volunteered for humanitarian assignments and spent a year and a half each in both Mozambique and Israel. To our surprise, we don't yet feel old and were grateful to be invited by Mitch Michelsen to look into another career in Bi-Tron. Arizona is a big state and

Phoenix is the fifth largest city in the United States. We have been surprised and delighted how quickly our business has developed here and look forward to getting distributors started in other areas. The support we have received from literally everyone in Bi-Tron has been wonderful. We look forward to more excitement and adventure and the avoidance of daytime television for years to come.

ALEX FRASER PRESIDENTIAL FOUNDER!

Alex Became a Bi-Tron product user under NATO in November 1998. He found that it was an exceptional product and has continuously used it ever since reporting an average annual return on fuel reduction costs of over 29%. Bi-Tron easily pays for itself! With the invitation of Dick Simmonds, the present Bi-Tron CEO, to join Bi-Tron Global in late 2002, Alex has steadily been educated by the products, the Bi-Tron conferences, conference calls and meetings to a better understanding of the whole process of MLM and network marketing.

By helping those who wished to get and use these excellent and very effective Bi-Tron products over the years, Alex has achieved the level of Associate, Founder and Presidential Founder. He is currently working towards the levels of Coordinator and Director, with the assistance of his downline and support from Bi-Tron head office. He will continue on a part time basis to promote the Bi-Tron benefits into the future. He chose to grow with and benefit from his association with Bi-Tron Global.



Above: Alex Fraser

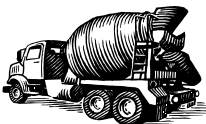
INDUSTRIAL PROGRAM IT'S HERE NOW!



The new Industrial Program was unveiled with great excitement at the April Penticton International Leadership School. Thanks to your feedback and popular demand this program was created. Keep it up!

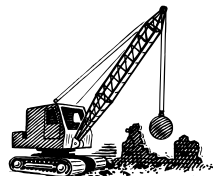
The new Industrial quantities will be available in 4L jugs and 20L pails. Special requests can be made for a 205L drum for all of our products. Some Industrial

products may be shipped as Dangerous Goods and therefore require extra care



when being handled and shipped. Industrial products should be shipped to the final destination when ordered.

The Industrial products are completely commissionable and available for retail and wholesale use and sale by Distributors in Canada. The Industrial Program will be available shortly in the United States.



BRAD NEW AUTOSHIP OPTION IS NOW AVAILABLE! PENETRATING LUBRICANT AUTOSHIP

Bi-Tron Penetrating Lubricant has grown immensely in popularity by Bi-Tron Distributors and industrial users! We have decided to make it easy for everyone to meet the demand for this exceptional lubricant by putting together an Autoship package. You can now set your monthly Autoship to Penetrating Lubricant Autoship! Each Autoship will come with ten (10) Penetrating Lubricant 4oz bottles. You can do all this by logging into your Bi-Tron Back Office and selecting *Autoship Setup*. For more information call us @ 1-866-824-8878.



**Bi-Tron
Rewards
Autoships
will be
available
in May!**

BI-TRON REWARDS**AMAZING NEW PROGRAM!****Advertise your product or service!****CONSIDER THESE MERCHANT BENEFITS:**

- Expose your business, products or services to 100's or 1000's of your target market today!
- Bi-Tron is constantly building local, regional, national and international markets both online and offline for you.
- With this ever increasing customer base...your profits will increase while your cost does not.
- You can change your offer based on your inventories, sales cycle, margins on products and supply.
- Quickly create time sensitive promotion with a high fear of loss motivation.
- Extend your reach and expand your markets with shippable and electronic products and services.
- Save Money for yourself with your own Bi-Tron Rewards Card when purchasing from fellow merchants.
- Bi-Tron Rewards is a dynamic marketing tool that reaches many unique visitors near and far at a very low price.

With Bi-Tron Rewards customers are looking for you and your special

offers...instead of you looking for customers.

A NETWORK WITHIN THE NETWORK

- As we grow our Network of Customers, Members and Distributors so does your ability to sell your products and services.

- Think of it.....1000's of sales people promoting your business.

The Service we offer should sell for \$10,000 plus.....but not at Bi-Tron Rewards.

VALUE AND SERVICE IS THE NAME OF THE GAME - Ad Pack

- Our Ad Pack product is available for a one time, unbelievable introductory low cost of \$149.95 and a monthly hosting cost of \$9.95.

How many customers does it take for you to cover the cost of just \$9.95 per month?

GUESS WHAT ELSE WE CAN OFFER - Your Personal Video

- If a picture is worth a thousand words then what we have in your 10 min personal video commercial about you and your company is worth a million words.
- Don't just tell people what you have....Show them...with our Video

Ad Pack Product.

- We bet you are thinking—expensive?
- For just \$495.00 one time purchase and a monthly cost of \$29.95 all this can be yours!
- Get all the benefits of the Basic Ad Pack plus a 10 minute video to educate your potential new customers on the value of your products or services and why they should do business with you.
- Think of the Wow factor!-This will give you lots to talk about to new and old customers.
- You can now even create your own DVD and use this new marketing tool in any part of your customer interactions.

We continually create unique and proprietary ways to assist you in building your sales using our network...you can start reaching and using that network today!

WWW.BITRONREWARDS.COM

**HERE'S A SMALL SAMPLE OF THE COMPANIES WITH OFFERS AVAILABLE ON BITRONREWARDS.COM NOW!**

WHAT PEOPLE ARE SAYING!

I had a Honda in the 90's that after a trip to the mountains I discovered had no oil in the engine. The engine had not overheated totally due to the fact that I had Bi-Tronized the car before going on the trip. Otherwise I would have lost my engine.

Edward David

I put Bi-Tron in my 4x4 Jimmy. At one point the water pump broke and I lost all the oil about 5 miles from home. I drove my 4x4 home without water and oil. I was praying that the 4x4 would be alright after I got home. And it was! I was so thankful to Bi-Tron and God for getting me home from the middle of nowhere.

Darlene Munro

I gave some Penetrating Lube to a friend who put it into the cylinder head of a rototiller that had seized due to rust. 20 minutes later he could move the crank with his hand. The tiller sat outside unused in rain etc. for 2 years!

Mike Dean

Our fridge doors squeaked when being opened. I was unable to sneak a snack. Thank heavens for the Penetrating Lube I can now raid as I please!

Debbie Watson

I had a diesel truck that would not run on all 8 cylinders and we thought we would have to replace the engine. We added Bi-Tron and the problem was solved! A savings of \$13,000 for a new diesel engine!

Dan Watson

I drive a Ford F350 Superduty Crewcab 4x4 which before Bi-Tron got about 440km per tank of fuel. After adding Bi-Tron my mileage increased to about 575km. A 135km increase! Oh yeah, this is with a V10!

Jeff Bandick

My 6.5 year log shows a return of 29% with Bi-Tron! Net Bi-Tron cost was less than nothing!

Alex Fraser

Bi-Tron has made me a better person and is showing me what real people are all about. I also have been meeting a lot of new people that are becoming good friends. It's nice to be in a company that's going places. Thank you all!

Bruce Nickason

After Bi-Tronizing my 1998 Plymouth Voyager I went from 400-415km/tank. To 525km

Violet Green

I have a 1995 Ford F150. I generally have no problems with the truck, but as with most Fords that I have owned the power steering pump is very loud. I put the Powertrain & Gear Formulation into the power steering pump and the noise was virtually gone. I have had the product in the power steering for about 5 months and that noise has not come back.

Jeff Baker

FOUNDERS PROGRAM REFRESHER

Step #1 All participants in the Founder's Pool must Activate 1 management centre (\$300 PBV) and generate 150PBV each month during the Founder's Period to remain active. In lieu of the 150 PBV, participants may generate \$100 PBV of monthly Autoship volume. In addition you must meet the following qualifications;

Step #2 Consists of one of the following 3 options

Option 1) You can earn one share in Pool 1 for every rank you advance in the Compensation Plan during the Founder's Period above and including the rank of Director.

Option 2) You can accumulate 1500 PBV (Personal Business Volume) within your first 30-days.

With this option you must either generate 150 PBV or \$100 PBV of Autoship volume. This entitles you to participate in the Founder's Program but you are not a Founder yet!

To be a Founder you must, in addition to the above Option 2 Requirements, personally sponsor 6 Active Distributors who complete step 1 and remain \$100/150 PBV active for a minimum 90 day period immediately following your enrollment. This entitles you to one share in Pool One.

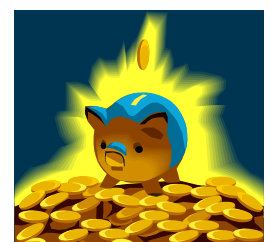
Earn **additional** shares in pool one for every six additional Personally Sponsored Active Distributors who complete step 1 and remain \$100/150PBV active for a minimum 90 day period.

Option 3) Purchase a Founder's Inventory Pack consisting of 3 Combo Packs (\$300 PBV x 3 =900 PBV) and generate 150 PBV or \$100 PBV of Autoship volume each month.

This entitles you to participate in the Founder's Program but you are not a Founder yet!

To be a Founder you must, in addition to the above Option 3 Requirements, personally sponsor 6 Active Distributors who complete step 1 and remain active for a minimum 90 day period immediately following your enrollment. This entitles you to one share in Pool One. Earn **additional** shares in pool one for every six additional Personally Sponsored Active Distributors who complete step 1 and remain active for a minimum 90 day period.

A PRESIDENTIAL FOUNDER is someone who helps a personally enrolled member complete the necessary steps above and become a Qualified Founder and is a Qualified Founder him/herself.



BI-TRON INTERNATIONAL LEADERSHIP SCHOOL**JULY 14, 15 & 16 AT THE GRAND OKANAGAN RESORT IN KELOWNA****Bi-Tron Leadership School**

Single Ticket
\$149.00

Couples Ticket
\$249.00

For tickets:
call: 1-866-824-8878
or e-mail support@Bi-Tronglobal.com
or register online!

BOOK NOW!

**THIS IS AN AMAZING LEARNING
OPPORTUNITY!**

**BRAND NEW CONTEST!****WIN \$1,000!**

Register 30 Retail Membership Cards. Join the 30 Club & Receive the 30 Club Pin.

Sell 30 Active Retail Ad Packs and 30 Cards. Join the 60 Club & Receive the 60 Club Pin.

Sell 30 Active Retail Video Packs 30 Ad Packs and 30 Cards
& Receive the 90 Club Pin.

**First one to hit the 90 Club will receive a \$1000.00
Bonus!**

***Retail Sales ONLY apply for the contest.**

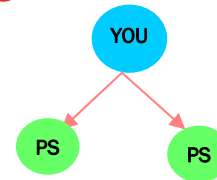
Call or e-mail us to find out more:
[1-866-824-8878](tel:1-866-824-8878)/support@bitronglobal.com

APRIL QUALIFIED DISTRIBUTORS

Brendan Egan
Terence Novocosky
Art Dodd
Gary Dunn
Jonathan Thomas
Robert Simons
Herbert Fleming
Ken & Deanne Mackay
Alan Charlton
John Petkau
Ivar Rye
Dominic Cianni
Bruce Virostek
Flemming Bech-Hansen
Don Hartel
Allen Schwabe
Wes Llewellyn
Barry Worden
Adeline Holland
Roberta Takacs
Daryl Froess
Marianne Welliver
H. E. Heinrichs
Lyle Williams
Art Cowie
Chris Cornett
Al Williams
David Hutchison
Brian Skinner
Ted Berg
Fred Sessions
Cheryl Bright
Brad Skinner
Ryan Racoma
Naville Fernandes
Carol Wrenn
Jeff Bandick
Doris Ptolemy
Colin Atkinson
Giselle Mikela
John Almond
Kim Elton
Darren Saiki
Rolin Consultants
Don Lecomte
Darryl Garrison
Andy and Linda Heatherington
Doug Moffat
Chuck Brady
John Straw
Jim Thayer
William Cook
Mary Dennis

Jake Wiens
Philip Goddard
Jo-Anne Meissner
Ken Scarrow
Chris Randall
Carole Heinrich
J. Michael Forbes
Allan Crawford
Al Patterson
Terry Minnis
Bill Millikin
Jane Kriese
Dan Steer
Jeff Bandick
Fred Martinson
Harold Carmont
Kim Meissner
Paul Raymond Richardson
Mary Jean Adams
Larry Sokoloski
Robert Hall
Edwin Epp
Robert Martz
Jeff Patterson
Walter Wright
Brian McLean
Vern Gatteringer
Brian O'Keefe
Jan & Garry Berdahl
Marc Beaulieu
Violet Green
Marie Nobles
Phil McDonald
Paul Gifford
Keith Tajiri
Audra Deane
George & Tuula Rands
Irina Allen
Les Humphries
Karl Engbrecht
Cathy Haig
Julia Craig
Dave Graham
Edward Thomas
Steven Poltorak
Trish Landolt
Albert Isadore
Lisa Beal
Andrew Male
Kristi Selhorst
Nolan Uyeda
Rick Olsness
Bryan Moskaluk

Kelly Harris
JoLayne Advent
Larry Allen
Doug Duerksen
Angela Cianni
Robert McEwan
Garry Cluley
Joseph Wilmott
Susan & Robert Sobko
Aaron Mueller
Bruce Eden
David Walker
Merle Johnson
George Ross
Elmer Bell
Karen Scott
Glen Grunert
Kathie Valantine
Ann Lemieux
Hans Schulz
Michael David Brown
Lynn Shank
Mike Olsson
Marlene Tymofichuk
Jack Pine Marine
Howard Olsen
Dan & Debbie Watson
George Moen Jr.
John Randall
Donovan Peters
Brian Trenchuk
Larry Farnsworth
Ken Kunka
Clearview Marketing & Sales
Wayne Vogeler
Carisu Dodd
Grant Cartwright
Kim Semeniuk
Christie Anderson
Sam Chamberlain
David Duncan
Tammie Olson & Marcel
Joyal
Mike Dean
Carla Kanter
David Chamberlain
Bob Caldwell
Dalyce Craig
Bruce & Geraldine Webb
Gail & Walter Buizer
Michael Babcock
Christine B.
Colin W. Day



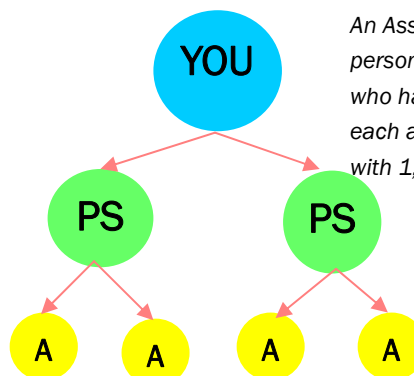
A Qualified Distributor must have two active distributors which were personally sponsored (PS) and be active him/herself.

Dean Schneider
Tracey Beaven
Marlyn Romero
Scott Berg
Dave Langen
Jeff Todd
Rick Waddell
Barry Wright
Mark Terry
Clark Davidson
Carl Riddle
Wallie Hawkens
Maurgo Wilson
Ryan Gibson
Ryan Bright
Ronald Anselmo
Anne Stadnyk
Neil Lensen
Diana Blake
Steve Erb
Douglas Burtch
Allen McLean
Penny Pinchers
Jim Barr
John and John Jr. Vilua
Daniel Fontaine
Melody Russett
Curt & Jen Froess
George Pigeau
Bobtech
Dorla Malo
Steve Fox
Ron Herbig
Terry Hamilton
Arnold Wollmann
Winston Shipowick
Paul Hanson
Marvin Ritchie
Wes & Darcy Dyck
Willow Draw Holdings Inc.

APRIL ASSOCIATES

Lorne Gilbertson
Elaine Advent
Dale Forsythe
Scott Miyano
Kevin Foley
Mark Olney
Della Hallowell
Jeffrey Wilson
Ron Ray
Patrick Von Pander

William Atkinson
Cam Shipowick
Andrew Tajiri
Alex Fraser
Luigi Cianni
Garry Cluley
Sirn Michelsen
Edward Thomas
Ray Caldwell



An Associate must have two active personally sponsored distributors who have two active distributors each and be active him/herself with 1,000 TGBV.

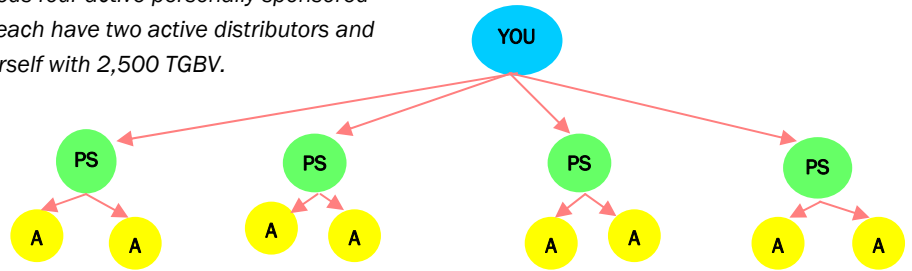
APRIL COORDINATORS

Ken & Angie Meissner

David & Cheri Peters

Bob Frew

A Coordinator needs four active personally sponsored distributors who each have two active distributors and be active him/herself with 2,500 TGBV.



APRIL DIRECTORS

Duane & Norma Andrew

Ernie McLean

Robert Skinner

Tim & Jo-Anne Meissner

Christine Page & Herb Escher

Greg Bright

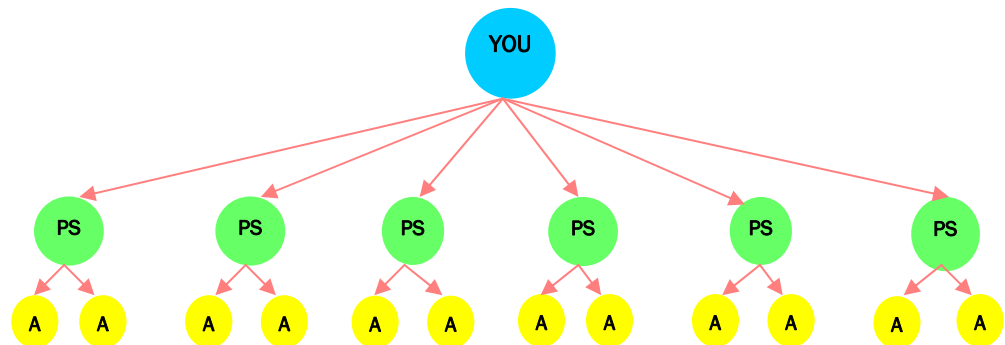
Jerry and Adam Heinrich

George & Sarah Moen

Donna Willon

Leon Froess

Terry Webber

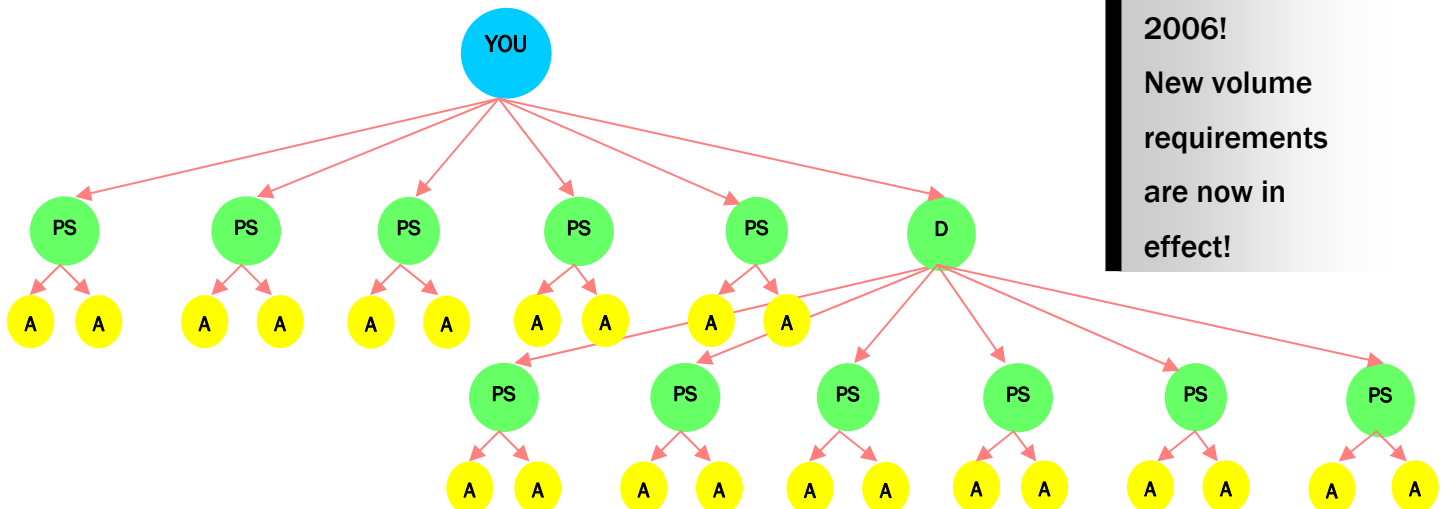


A Director needs six active personally sponsored distributors (PS), and each personally sponsored distributor needs to have two active distributors while the Director is active as well and 5,000 TGBV is maintained with no more than 40% of BV coming from one leg.

APRIL BRONZE EXECUTIVES

Doug & Mary-Anne Burtch

Chuck & Erin Pinnell – CP Consulting



A Bronze Executive must have all the attributes of a Director and then one of the distributors in their personal group must become a Director. Group volume (TGBV) must be 10,000 with a maximum of 40% from one leg.

**The Bi-Tron
Compensation
Plan has
changed on
March 31,
2006!
New volume
requirements
are now in
effect!**

WEEKLY CONFERENCE CALLS AND BROADCASTS

MONDAYS

Live Leadership Conference
Call 6:30 p.m. (P.S.T)

To attend these live and exciting calls call:

1-212-990-8000 and enter the pin number **1524#**

TUESDAYS

Live Internet TV Broadcast Join in one at www.Bi-Trontoday.com or follow the link from your own homepage. Get your questions answered live on air!! Streaming **LIVE at noon 12:00pm (P.S.T.)** on Tuesdays!!

THURSDAYS

Live Training Conference
Call 5:30 p.m. (P.S.T)

To attend these live and exciting calls call:

1-212-990-8000 and enter the pin number **1524#**

Expanded Training session after initial business presentation

SATURDAYS

Live Training Conference
Call 8:00 a.m. (PST)

To attend these live and exciting calls, phone:

1-212-990-8000 and enter the pin number **1524#**

To mute press *6

INTERNATIONAL LEADERSHIP SCHOOL

GRAND OKANAGAN RESORT

KELOWNA, B.C.

July 14, 15th and 16th, 2006

Cost: \$149.00 per distributor or \$249.00 per couple

Call Corporate Office at 1-866-824-8878 for tickets or signup online by logging into your account and clicking on the registration link on the welcome page.



WEEKLY BUSINESS BRIEFINGS

FOR A COMPLETE LIST AND DIRECTIONS VISIT WEEKLY EVENTS ON YOUR WEB SITE

ALL DISTRIBUTORS AND GUESTS ARE WELCOME!

All weekly meetings:

Registration: 7:00pm Start: 7:30pm

TUESDAYS :

Abbotsford, BC

Crossroads Restaurant 1821 Sumas Way

For any questions or directions contact Jeff Bandick at 1-866-200-1269 or jbandick@shaw.ca

Kelowna, BC

Holiday Inn at 2569 Dobbin Street, Westbank, BC

Nanaimo, BC

Inn at Long Lake – 4700 North Island Highway (19A)

Contact: Dan Watson @ 1-866-225-6851

Mesa, AZ

1042 E. Ingram St.

Contact: Ray Caldwell @ 928-243-3131

Los Angeles, CA

Access Real Estate Services

Suite 116-195 E. Hillcrest, Thousand Oaks, CA 91360

Contact Steve Fox: 805-405-1220 cell or office 805-497-8009 or stevefox@linkline.com

WEDNESDAYS:

New Westminster, BC - Registration 5:00pm Start 5:30pm

Westminster Club 713 Columbia Street

For any further assistance call 1-866-824-8559

Vernon, B.C.

Schubert Center - Coffee Shop

3505 30th Ave., Vernon, B.C.

Please contact Tim Meissner at 250-306-0222 for any enquiries

THURSDAYS:

Penticton, BC

Lakeside Resort Convention Centre (Zinfandel Room) 21 West Lakeshore Drive

250-493-7151

Kamloops, BC

Maverick Motor Inn

1250 West Trans Canada Highway

250-828-0664

Calgary, AB

The Danish Canadian Club

735, 11th Ave, S.W.

Tel: 403 261 9774